

incluminate

Home lighting backup for vulnerable users

Design & development by Dan Lockton
www.danlockton.co.uk

Patent applied for



- For an elderly or infirm person living alone, changing a blown light bulb may mean a difficult and unsafe climb up onto a chair, often in the dark.

incluminate solves the problem.

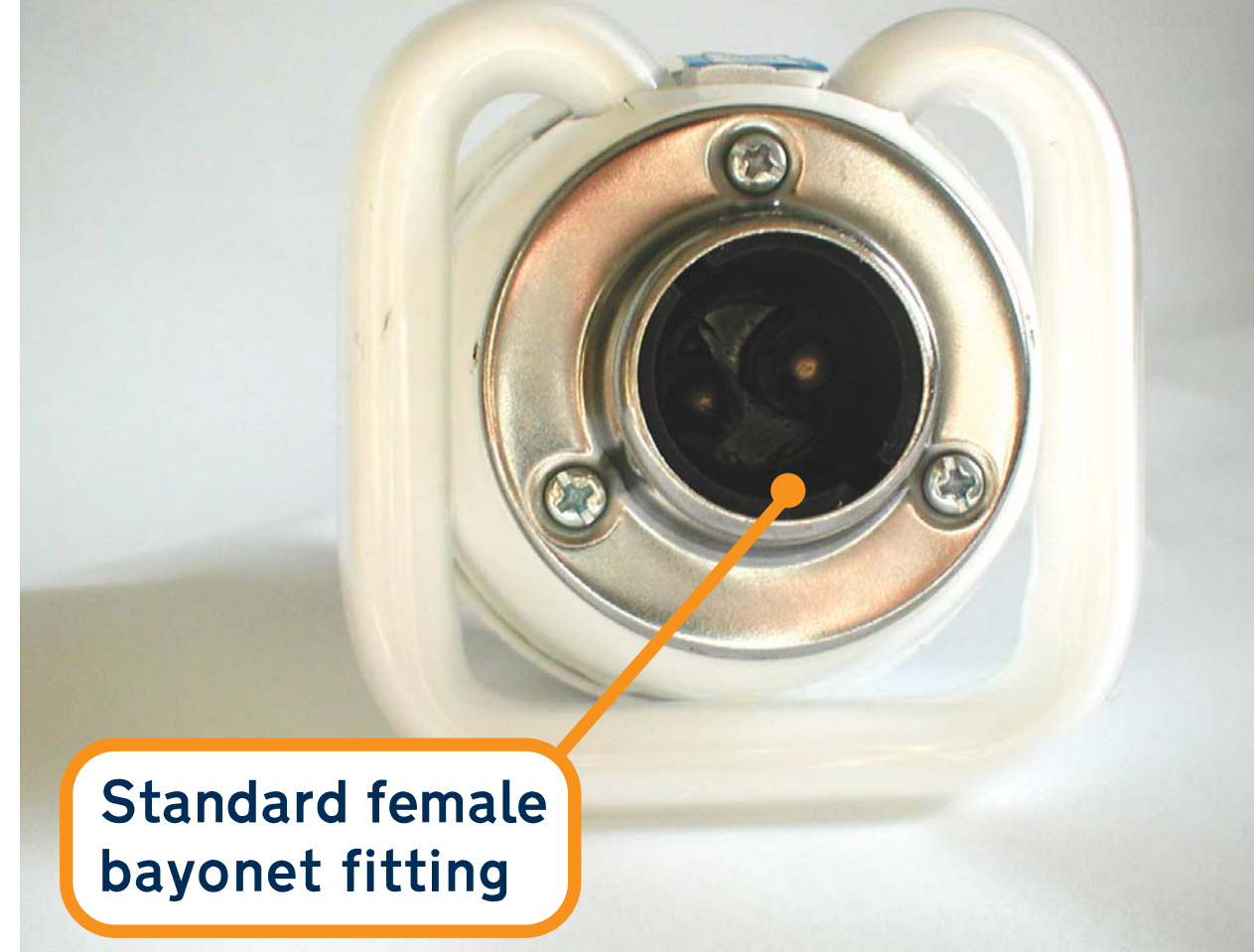
Fitting simply between the light bulb and the socket, **incluminate** detects a failed bulb and switches on a built-in compact fluorescent tube to provide a similar level of illumination.

incluminate



Standard male bayonet fitting

Built-in compact fluorescent tube

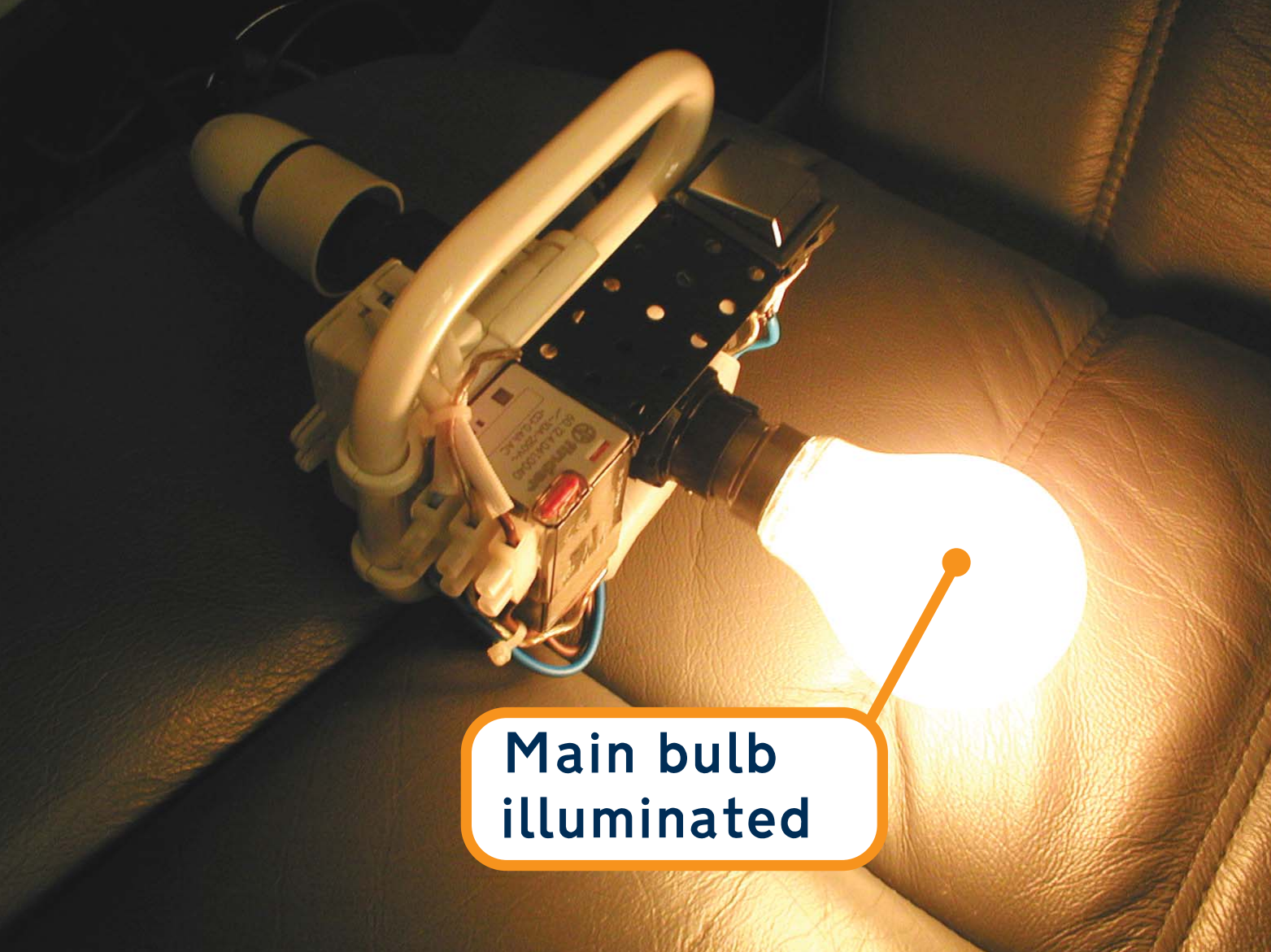


Standard female bayonet fitting

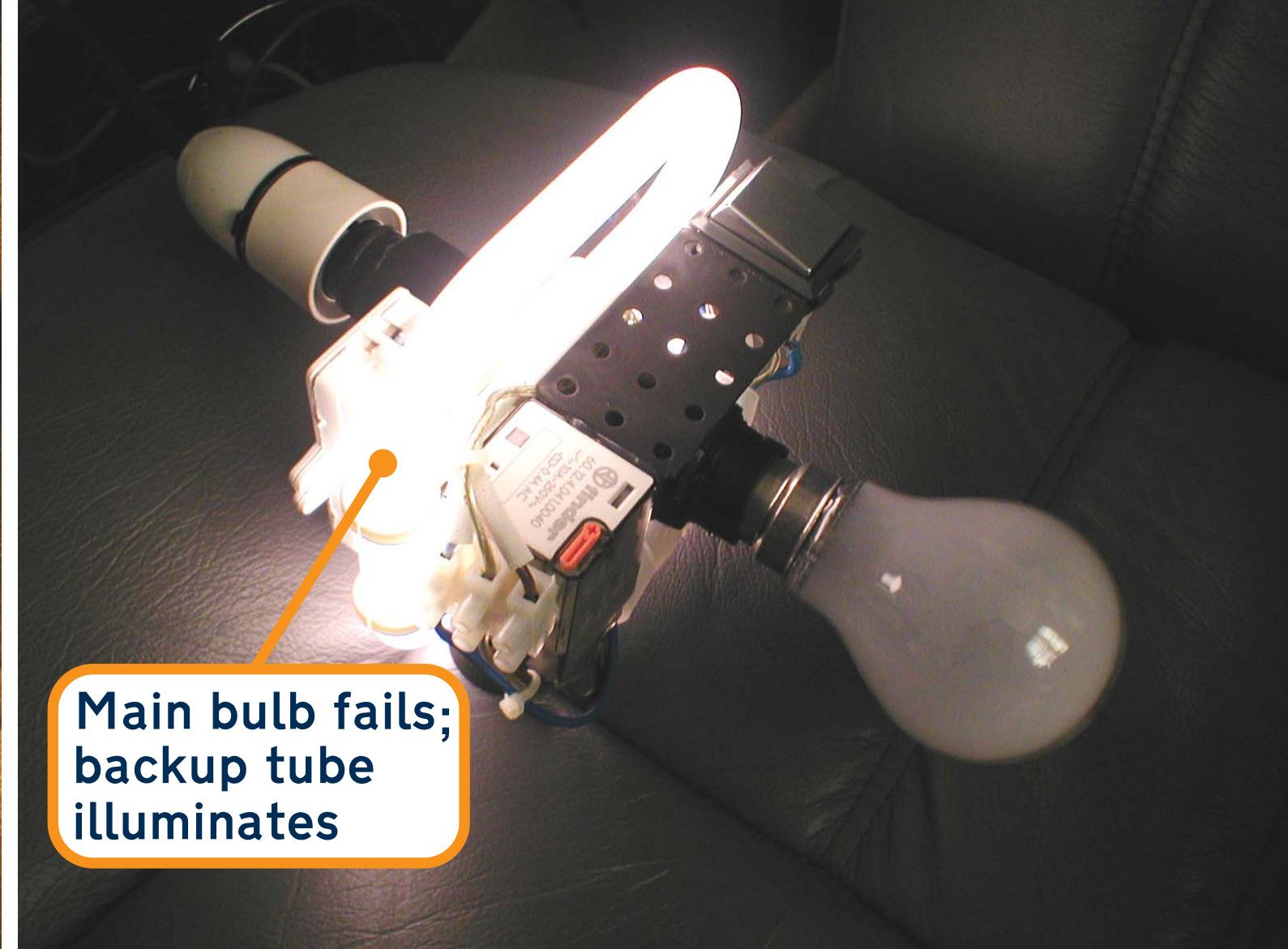


Bulb fitted: ready for use

incluminate



Main bulb illuminated



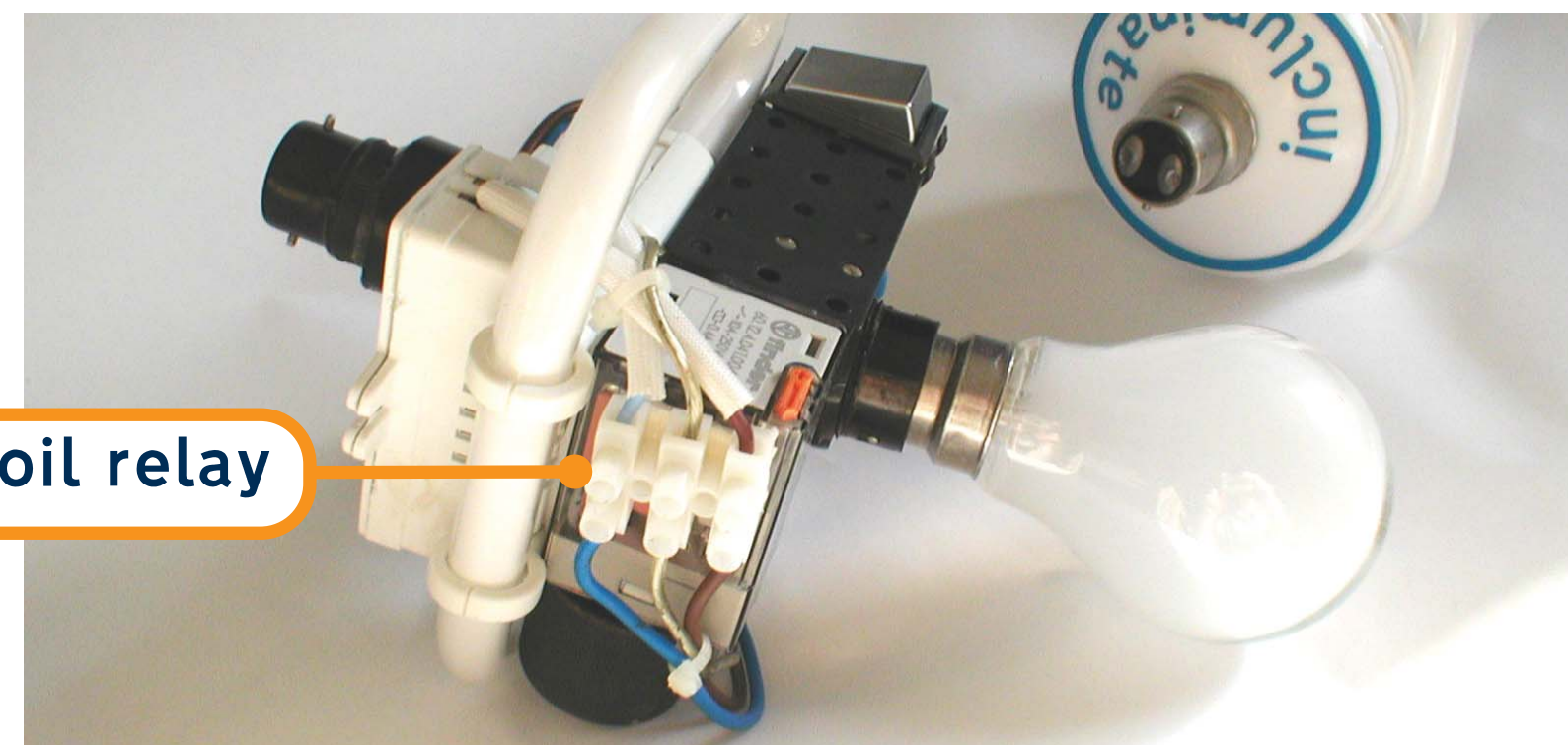
Main bulb fails; backup tube illuminates

incluminate is a compact device, fitting unobtrusively into standard bayonet sockets (a screw-fit version will also be a simple variant). The working prototype is larger than a production version, for ease of testing & modification.

No special expertise is required to install **incluminate** — it is entirely ‘fit and forget’, and maintenance-free, and indeed would be useful for every household, particularly in areas where changing a bulb is awkward (e.g. over a stairway).

A thermoset such as urea formaldehyde would preferably be used for the case, and a retail price of £8 - 10 is envisaged.

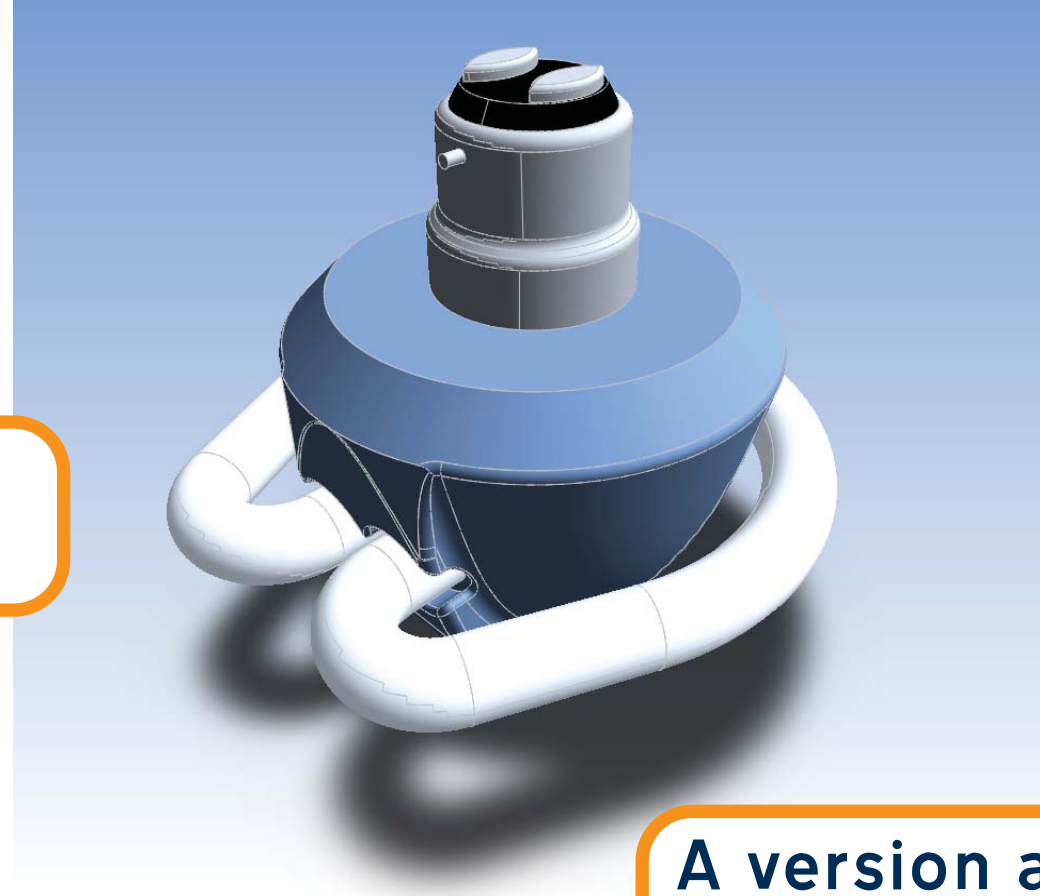
AC coil relay



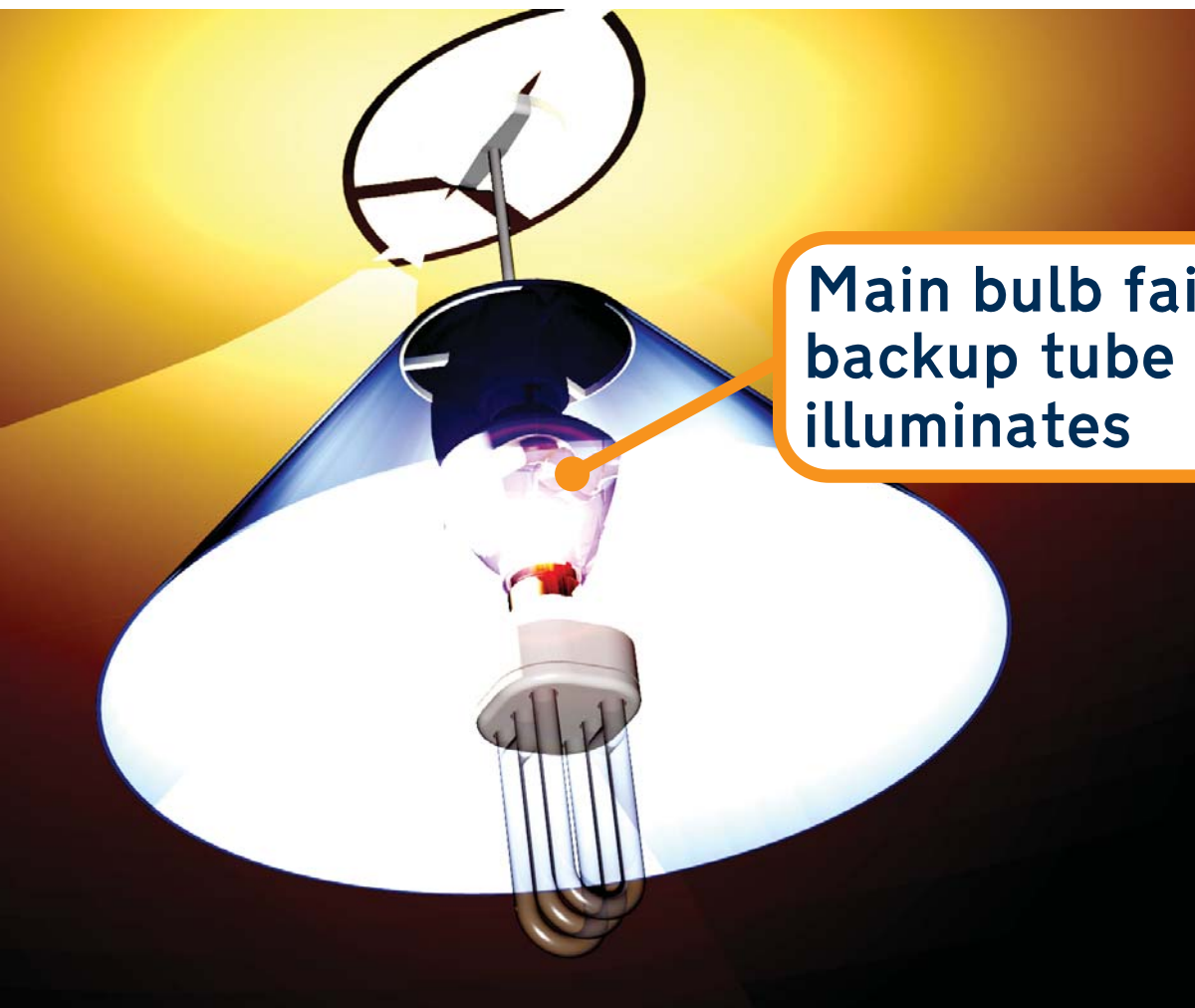
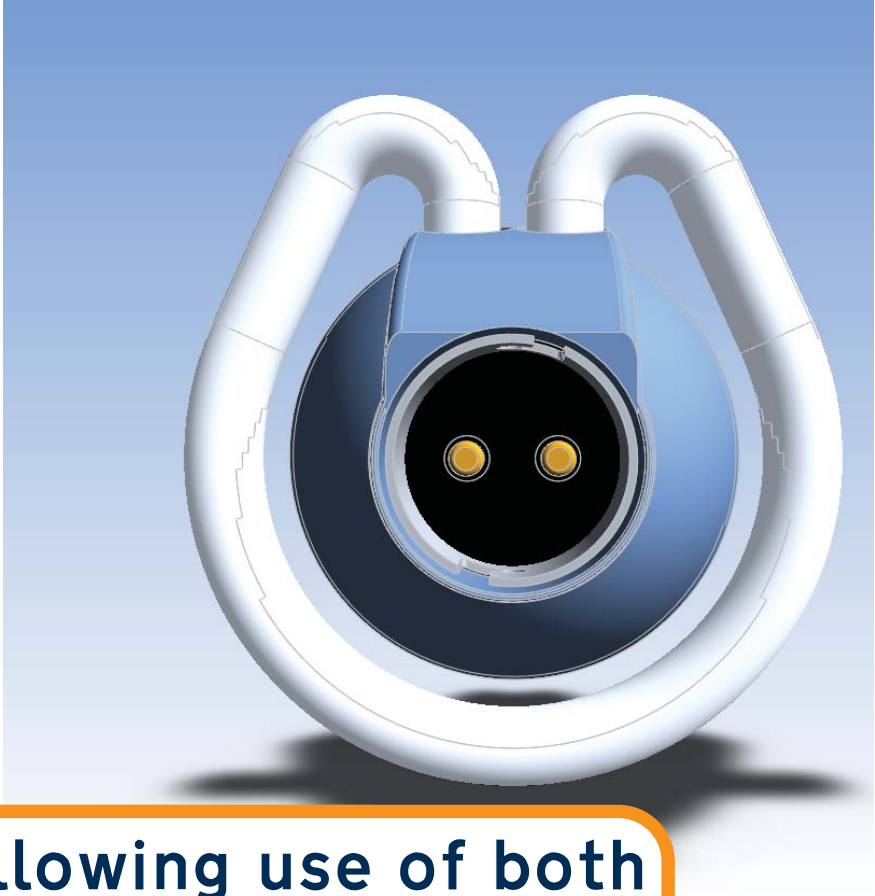
incluminate



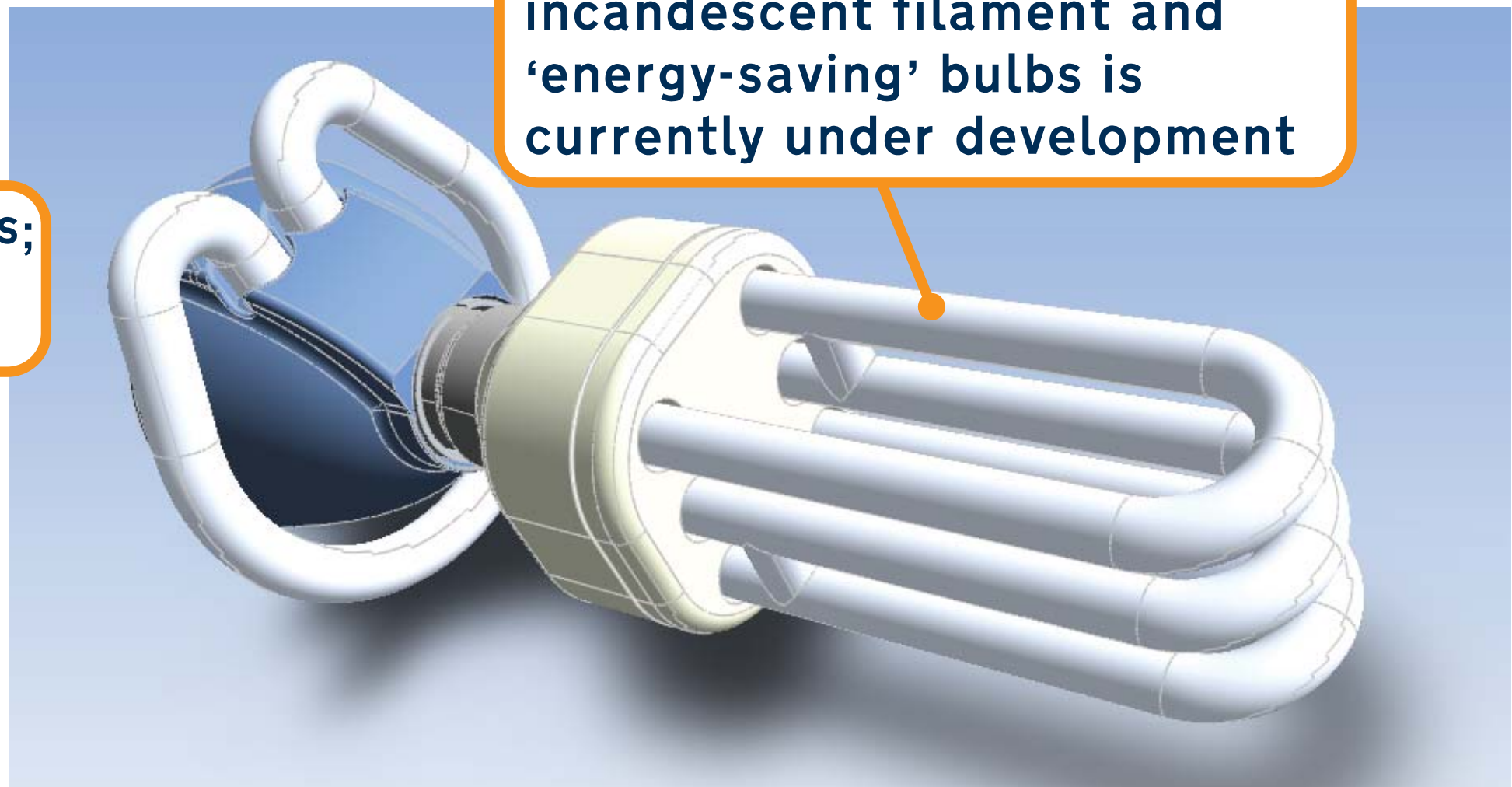
Main bulb illuminated



A version allowing use of both incandescent filament and 'energy-saving' bulbs is currently under development



Main bulb fails; backup tube illuminates



incluminate